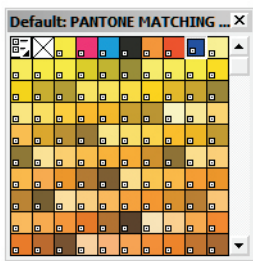


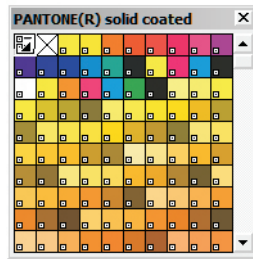
Load Custom Color Palette

>> Tip:

If you are trying to match specific spot colors or produce spot color separations, you will need to select a spot color palette in CorelDRAW. We recommend the Pantone Matching System Color 8 palette because it contains all of the popular spot colors in a logical color order. Other spot color palettes will also work well for spot color separations such as Pantone Solid color palettes. The Pantone Solid color palettes are not as well organized as the Pantone Matching System Color 8 palette.



Pantone Matching System Corel 8 Color Palette



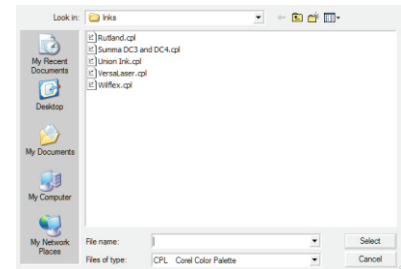
Pantone Solid Color Palette

The Load Custom Color Palette feature will enable you to load color palettes for specific screen printing inks, printers or laser engravers. This is especially useful if you are trying to match a specific color for a direct to garment printing or digital printing process. After loading a custom color palette you will be able to color your designs with the colors in the palette.

Loading a Custom Color Palette

Steps to Follow

1. Select **Load Custom Color Palette** from the **Art Preparation** tab in the Smart Designer Control Panel.
2. After the window appears, select a color palette from the available **cpl** files.



Load Custom Color Palette Window

Rutland: Matches screen print ink colors from Rutland.

Union Ink: Matches screen print ink colors from Union Ink.

Wilflex: Matches screen print ink colors from Wilflex.

VersaLaser: Used with a Universal VersaLaser to create vector cut lines.

Summa DC3 and DC4: This palette is used by a Summa DC3 or DC4 printer/cutter to create cut lines and print spot ribbon colors.

Note: New palettes may be added when Smart Designer X3 Updates are installed. To check Smart Designer X3 for available updates, select **Smart Designer X3 Updates** from the **Help, Support and Updates** tab in the Smart Designer Command Center.

3. The selected palette will be added to your CorelDRAW workspace. You can close other open palettes by right mouse-clicking on the top of the palette and selecting the **Close** option under the **Palette** fly-out menu.
4. To set a color palette as your default palette, right mouse-click on the top of the palette and select the **Set a Default** option. Any palettes that are open when you close CorelDRAW will be available the next time you open a document in CorelDRAW.

Note: You can print color charts that correspond to the ink color palettes and Summa palette by selecting Print Color Charts from the **Printing and Cutting** tab in the Smart Designer Command Center.