

Bonus Update #1 for Wilcom DecoStudio

23 May 2008

This file contains a few last-minute notes on the Wilcom DecoStudio Bonus Update #1. This Bonus Update is intended for installation over an existing installation of Wilcom DecoStudio e1 (V1.0F Build# 22-5062):

Contents

Bonus Update #1 for Wilcom DecoStudio	1
Contents	1
Inclusions in Wilcom DecoStudio Bonus Update #1	1
Wilcom DecoStudio Bonus Update #1 installation notes	3
Solving problems in Wilcom DecoStudio.....	3
Getting help	3
Copyright	3

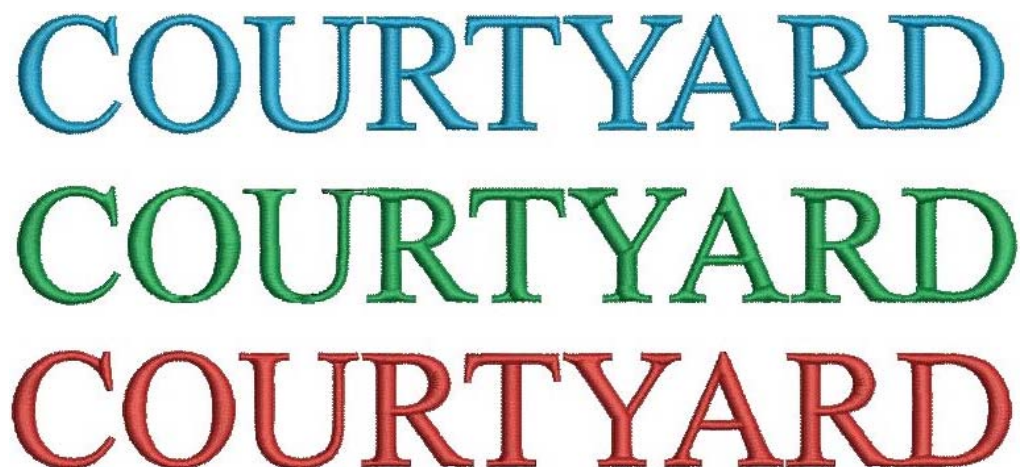
Inclusions in Wilcom DecoStudio Bonus Update #1

This Wilcom DecoStudio Bonus Update #1 includes the following:

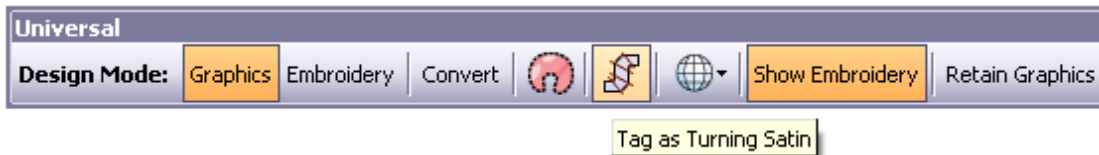
New TTF conversion of lettering shapes to curves

As a general rule, conversion quality of lettering objects is superior when they are retained as TrueType Font objects. With the first release of Wilcom DecoStudio, when a non-TTF object created in Graphics Mode is converted to embroidery, 'lettering shape' objects (lettering converted, enveloped lettering, etc) are not treated as TTF lettering objects. The Bonus Update now provides a way to use TTF conversion for lettering-style shapes. The following sample shows three conversion scenarios:

- Cyan: TrueType font converted with DecoStudio TTF conversion
- Green: Lettering shape objects converted with DecoStudio non-TTF conversion
- Red: Lettering shape objects converted with DecoStudio TTF conversion



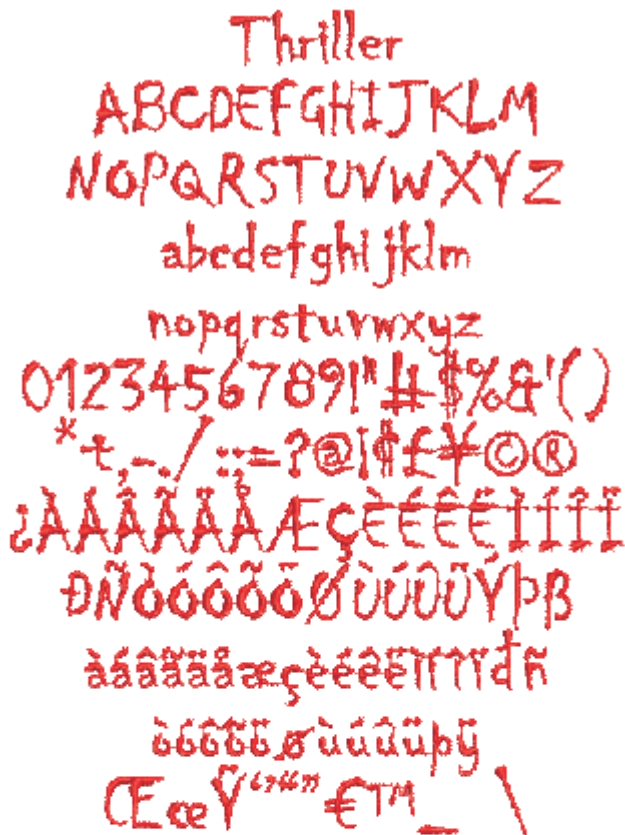
Note where the green example fails: normal object conversion does not handle serifs well and creates odd cuts in sections of the Y, T, A and D letters. Stitching also fails to turn correctly in ring shapes such as the O. By contrast, in the red sample, serifs have been created, cuts are appropriate, and ring shapes identified correctly. Of course you have the choice of whether to use TrueType conversion for non-TTF lettering objects or not. A new button which looks like the TTF button for text objects is activated but it not selected by default. Note that it does not have the word 'Lettering' in the tooltip 'Tag as Turning Satin'.



This option gives you the flexibility whether to apply TTF conversion to selected non-TTF objects or not.

New Thriller alphabet inclusion

A new Thriller alphabet is included with the Bonus Update. Thriller should be used for standard lettering.



Alphabet contains:	Characters A - Z, a - z, 0 - 9 Punctuation and symbols European/special characters	
Colors	1	
Stitching	Normal - Satin	
Default Letting Spacing	0	
Connector / Join Type	Closest Join	
Recommended letter height	Minimum	10 mm
	Maximum	50 mm

Wilcom DecoStudio Bonus Update #1 installation notes

The DecoStudio Bonus Update installation program works for both Web and CD distribution, and does the following:

1. It searches for the currently installed DecoStudio e1 product (V1.0F Build# 22-5062). If the installation cannot find either version of the software, it will display an error message.
2. It applies the Bonus Update to the detected DecoStudio e1 product by:
 - a) replacing files from your existing installation with files contained in the Bonus Update.
 - b) adding new files contained in the Bonus Update to the existing installation.

Warning: Installing this Bonus Update with ANY other version of Wilcom software may cause unknown problems and the software may not work properly.

Solving problems in Wilcom DecoStudio

If you encounter a problem, refer to the following sources for help:

- DecoStudio User Manual - select Onscreen Manual from the Program Group under Start menu
- DecoStudio Online Help - select Help > Help Topics
- Windows Online Help - select Start > Help
- Windows manual
- Documentation supplied with your hardware.

You can also find 'troubleshooting' information on the Wilcom Support Center website, at <http://www.wilcom.com.au/support/>. The Wilcom Support Center is regularly updated with helpful system information.

Getting help

If you are unable to solve a problem, you should contact your Wilcom reseller. Before seeking help, check that your PC meets the system requirements, and check the Troubleshooting chapter of the Onscreen Manual.

Copyright

Copyright 1992-2008 by Wilcom Pty. Ltd. All rights reserved.

No parts of this publication or the accompanying software may be copied or distributed, transmitted, transcribed, stored in a retrieval system or translated into any human or computer language, in any form or by any means, electronic, mechanical, magnetic, manual, or otherwise, or disclosed to any third party without the express written permission of:

Wilcom Pty Ltd. (A.B.N. 62 062 621 943)
146-156 Wyndham Street, Alexandria (Sydney)
New South Wales, 2015, Australia
PO Box 581, Alexandria, 1435
Phone: +61 2 9578 5100
Fax: +61 2 9578 5108
Email: wilcom@wilcom.com.au
Web: <http://www.wilcom.com.au>

The 'Stitch Processor (SP)' portion of this product is protected by the following patents:

US Patent N° 4,821,662
European Patent N° 0221163
Japanese Patent N° 2029491

Curve Line Fill Stitching in this product is protected by US Patent No. 6,587,745. TrueView™ and Point & Stitch™ are trademarks of Wilcom Pty Ltd. Portions of the imaging technology of this Product are copyrighted by AccuSoft Corporation. The EPS File Import/Export Converter used in this Product is copyrighted by Access Softek, Inc. All rights reserved.

Corel, CorelDRAW and the Corel logo are trademarks or registered trademarks of Corel Corporation and/or its subsidiaries in Canada, the U.S. and/or other countries. The lynda.com logo is a trademark of lynda.com, Inc. Microsoft, OpenType, Visual Basic, the Visual Basic logo and Windows are trademarks or registered trademarks of Microsoft Corporation in the U.S. and/or other countries. PANTONE, PANTONE Hexachrome, the PANTONE Hexachrome logo and the PANTONE Digital Color logo are trademarks or registered trademarks of Pantone, Inc. Bitstream and the Bitstream logo are trademarks or registered trademarks of Bitstream Inc. This Product includes ITC licensed fonts and Bitstream typefaces. Kodak and the Kodak Digital Science logo are trademarks or registered trademarks of Eastman Kodak Company. The ITC logo is a trademark of the international Typeface Corporation. Other product, font and company names and logos may be trademarks or registered trademarks of their respective companies. This Product is provided under an enclosed license agreement that defines what you may do with the Product and contains limitations on warranties and your remedies. Corel Corporation 1600 Carling Avenue, Ottawa, ON, Canada K1Z 8R7 Corel UK Limited Sapphire Court, Bell Street, Maidenhead, Berkshire SL6 1BU, UK.